

THE MODEL WAREHOUSE

Protecting your investment in models, data and knowledge

MODEL DEVELOPMENT ENTAILS BIG INVESTMENTS

Model development is a major investment – whether the model is developed for a single purpose (for example, major infrastructure development) or as a base for on-going infrastructure maintenance and development. Many good models have been lost because of:

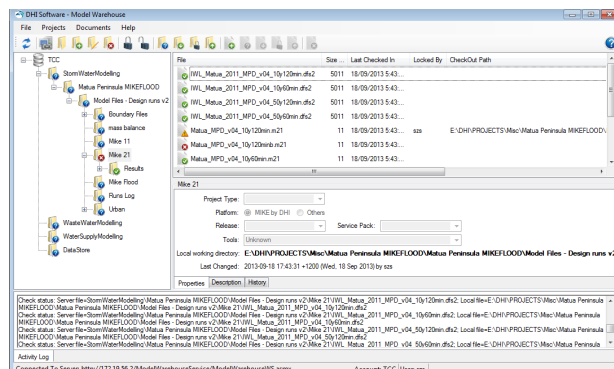
- file corruption
- incomplete model setup
- loss of knowledge about the model
- lack of metadata describing the model's state and purpose

THE MODEL WAREHOUSE

The Model Warehouse is a unique solution for your multiple model challenges. It provides a secure framework for managing our software-based models and other supporting files in single or multiple user environments. The Model Warehouse stores and retrieves models, tracks changes and manages access in a sophisticated web-based application.

Its main features include:

- safe model storage via a structured gateway
- ability to retrieve any previously loaded model with all supporting data
- multiple user support with file locking
- large file handling (result files)
- multi-level user permissions
- audit trail of model changes
- viewable model history logs
- simple but secure access via internet/ LAN connection



The user-friendly model interface

SUMMARY

CLIENT

- Model builders
- Utilities and councils
- Occasional users

CHALLENGE

- Need to manage multiple models simultaneously
- Difficulty in keeping track of model changes
- Need to capture model metadata and modelling software brands and versions
- Need to protect time and financial investments made in models and modelling software

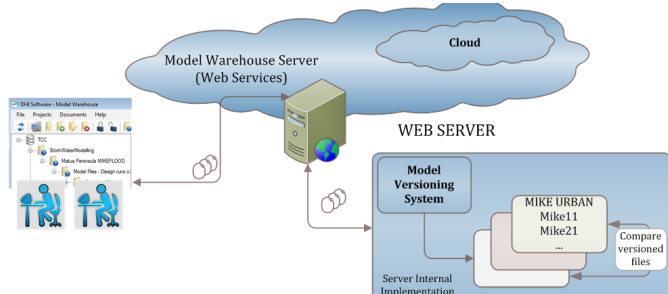
SOLUTION

The Model Warehouse – a secure framework for managing our software-based models and other supporting files in single or multiple user environments

VALUE

- Safe model storage, with simple but secure access
- Multiple user support and multi-level user permissions
- Easier management of different versions of modelling software
- Convenience in keeping track of changes
- Ability to manage multiple models simultaneously
- Protection of investments made in models and model software

- storage capacity of all model-related files including documents, notes, spreadsheets, GIS data, models from other software vendors and so on
- based on industry standard ASP .NET
- optional automatic model updating with regression testing and reporting



Model Warehouse architecture

SUPPORTING USERS

Model builders working either individually or in collaborative teams can successfully use the tracking and auditing features of the Model Warehouse. The Model Warehouse supports the model build, calibration and scenario analysis process by allowing multiple versions of the model to be stored with full auditing of model changes. Team support is built in with file locking/unlocking and comment functions.

Utilities and councils who receive models developed either in-house or externally, normally have to invest large sums of money and time in model development. The Model Warehouse protects this investment by offering a secure environment for model storage. Developed models can be optionally automatically updated and retrieved at any time through a structured gateway by authorised users.

Occasional users include individuals who need to keep models up-to-date and ready to run, but do not have the resources to maintain the models. The fully hosted version of the Model Warehouse can be the best-fit solution for such users.

INSTALLATION OPTIONS AND PRICING

CLOUD-BASED SERVICE

The cloud-based installation has an initial hosting price of NZD 1,200* and an annual hosting price of NZD 3,500*. In this option:

- the Model Warehouse is hosted by a data storage provider through DHI
- the user has administrator access to the Model Warehouse account
- Model Warehouse users can access the cloud-based system via a simple application installed on their workstations
- data transactions that may take a long time (such as initial project upload or large files) can be facilitated by our personnel, using portable storage media

INCLUDED IN THE PRICE:

- Access to Model Warehouse with up to 1TB storage space
- Initial configuration of user account and credentials
- 24-7 secure access to the storage via provided GUI
- Backups and hardware maintenance
- Automatic updates of the user GUI and the web server system.

ADDITIONAL SERVICES AVAILABLE (NOT INCLUDED IN THE PRICE):

- Storage above 1TB
- Manual data transactions (storage or retrieval)
- Custom data maintenance (for example, model upgrades)

IN-HOUSE INSTALLATION

The in-house installation – has an initial purchase price of NZD 15,000* and an annual Service and Maintenance (SMA) price of NZD 1,500*. In this installation option:

- the Model Warehouse is hosted internally on a suitable infrastructure (web server machine and software)
- Model Warehouse users can access the internal system for data storage, retrieval and maintenance via a simple application installed on their workstations. All communication is encrypted, secure and dependent on user permissions
- the client can administer and maintain the web server using provided Admin utility. This includes the system backup and hardware maintenance

INCLUDED IN THE PRICE:

- Model Warehouse system
- Initial discussion with client IT personal to understand any IT requirements for configuration
- On-site installation, configuration and user training
- A User Guide for the system including details of any organization-specific configuration
- SMA for the first year

ADDITIONAL SERVICES AVAILABLE (NOT INCLUDED IN THE PRICE):

- Custom development of user specific features and workflow integration
- Custom data maintenance (for example, model upgrades)

**Prices are valid until the end of 2014*

Contact: Suzana Shipton - szs@dhigroup.com