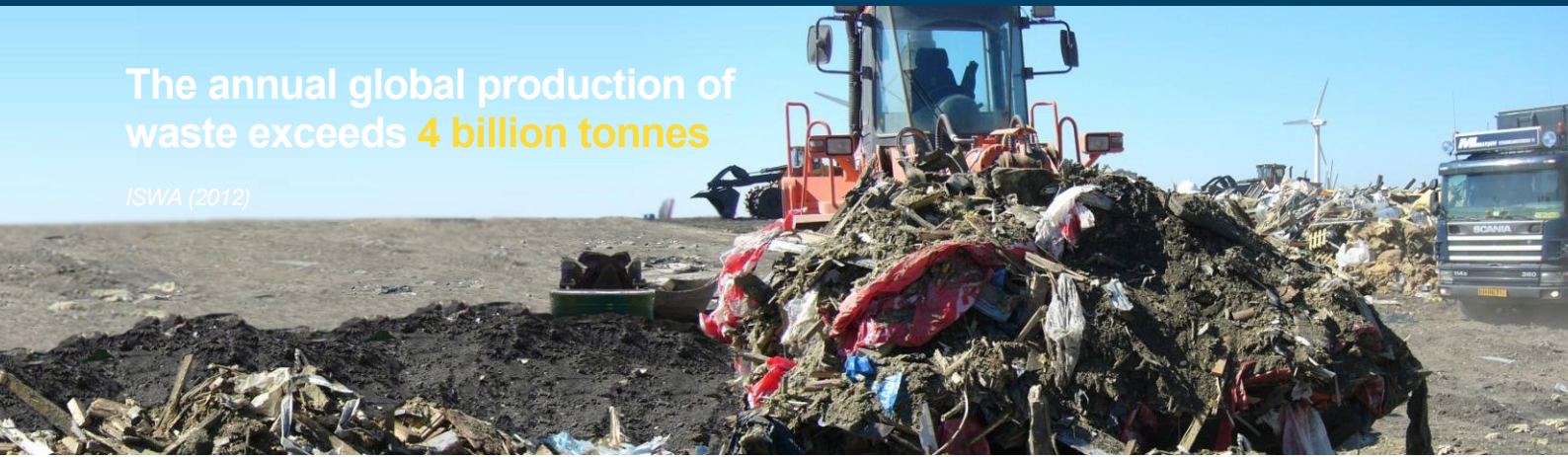




# The annual global production of waste exceeds **4 billion tonnes**

ISWA (2012)



## OUR TOOLS AND SERVICES

We have a wide range of tools and services to help our clients with effective waste and soil management. These include :

- sampling and characterisation of waste and soil
- classification of waste as hazardous or non-hazardous
- performance and interpretation of leaching tests
- performance of pilot scale and field testing of waste management options
- decision support for selection of waste management options
- development of risk-based criteria for reuse or landfilling of waste
- assessment or prediction of the environmental impact of waste management solutions
- development of strategies for sustainable management solutions that optimise resource recovery and minimise the environmental impact in the long term for specific waste types
- capacity building and training by THE ACADEMY by DHI

## LEARN MORE

### SOLUTION AND PRODUCT FLYERS

Learn more about what we can offer by reading our solution and product flyers, available in the dedicated collection on our Scribd library [www.scribd.com/dhigroup](http://www.scribd.com/dhigroup)



### CASE STORIES

Read more about the projects we have undertaken worldwide by reading our case stories. They are available in a dedicated collection on our Scribd library [www.scribd.com/dhigroup](http://www.scribd.com/dhigroup)



Contact us: [info@dhigroup.com](mailto:info@dhigroup.com)  
For more information visit: [www.dhigroup.com](http://www.dhigroup.com)